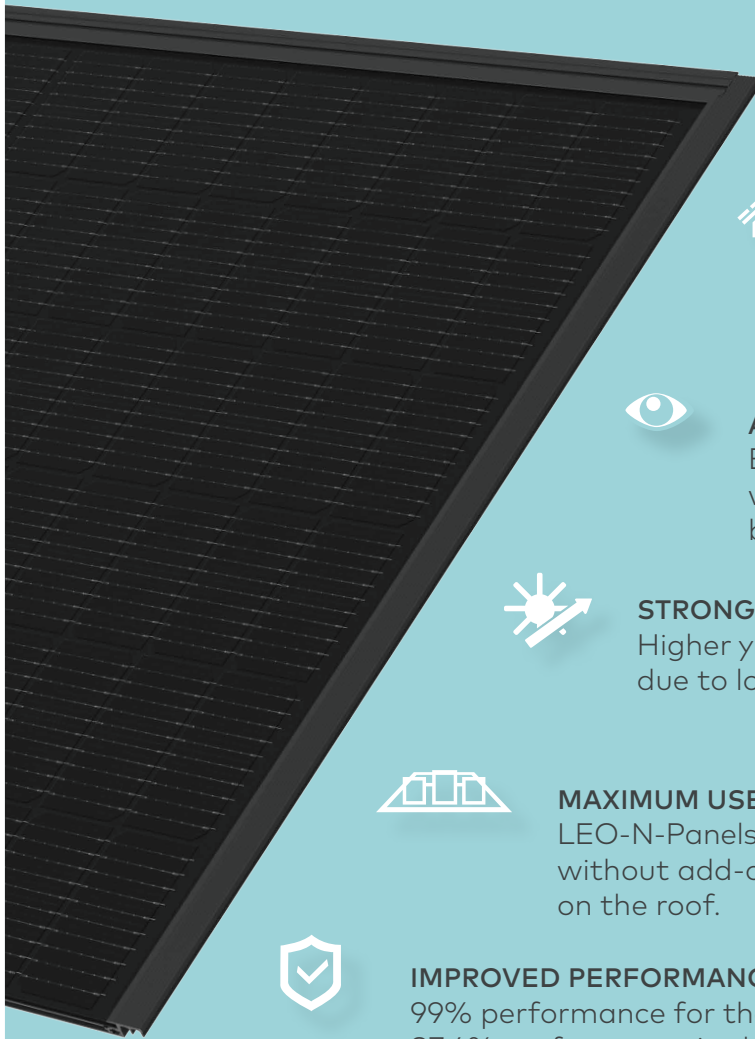


LEO-N Sol 370-380 W

Premium PV Panel

The durable one.
For a green planet.



N-TYPE TOPCON CELL
Longer-lasting, more powerful & efficient.



BIPV IN-ROOF SOLUTION

Solar building integration at the highest level. LEO-N Sol fits perfectly into your roof and replaces conventional roof tiles.



AESTHETIC

Elegant black finish. Closes homogeneously with the roof surface. Blind modules for beautiful and uniform appearance available.



STRONG IN HEAT

Higher yield at high temperatures due to low temperature coefficient.



MAXIMUM USE OF SPACE

LEO-N-Panels with 108 & 96 cells can be combined without add-ons. For maximum energy generation on the roof.



IMPROVED PERFORMANCE WARRANTY

99% performance for the first year, 87.4% performance in the 30th operational year.

MADE IN GERMANY!

Right here. In Prenzlau. In our production facility. Here we manufacture under the aspects of quality & durability since 2001.

FULL SERENITY



30 Years linear
Power Guarantee



30 Years
Product Guarantee

100% cost recovery of guarantee claims.
Under the terms and conditions of the respective guarantee certificate.

QUALITY UNDER HAND AND SEAL



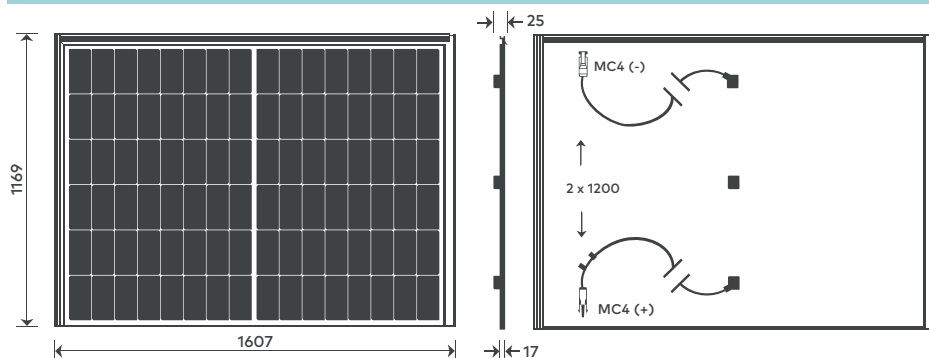
Design optimized with

SmartCalc.Module

aleo
www.aleo-solar.com

aleo solar panel LEO-N Sol 370-380 W Premium

DIMENSIONS [MM]



The frames of side-by-side modules interlock on the left and right sides. For more information, please refer to the installation manual.

grid dimensions: 1137 mm x 1589 mm

Please refer to the planning help on the website www.aleo-solar.com

BASIC MODULE DATA

Length x width x height	[mm]	1169 x 1607 x 17 (with junction box 25) (grid dimension 1137 x 1589)
Weight	[kg]	20.5
Number of cells		96
Cell size	[mm]	182 x 91
Cell material		Monocrystalline Si, n-type TOPCon
Number of Busbars		10
Front sheet		3.2 mm Solar glass (TSG) with anti-reflective coating
Back sheet		Polymer sheet, black
Frame material		Al alloy, black, powder coated

BASIC DATA JUNCTION BOX

3 parts junction box acc. to IEC 62790	[mm]	left & right: 62 x 58 x 14 middle: 49 x 55 x 14
Bypass diodes		3 (one per box)
IP class		IP68
Cable	[mm]	1200 (+), 1200 (-) acc. to EN 50618
Connectors		genuine MC4 acc. to EN 62852

CLASSIFICATION

Classification range (positive classification)	[W]	0/+4.99
--	-----	---------

LOADS

Max. module pressure load (Testload)	[Pa]	5400 ¹
Max. module pressure load (Designload) ²	[Pa]	3600 ¹
Max. module suction load (Testload)	[Pa]	2400 ¹
Max. module suction load (Designload) ²	[Pa]	1600 ¹
Max. system voltage	[V _{DC}]	1000
Reverse current load	I _R [A]	25

Mechanical load acc. to IEC/EN 61215:2021

¹ Please observe the mounting conditions in the installation manual

² Testload/Safety factor 1.5 = Designload

ELECTRICAL DATA (STC)

		S82T370	S82T375	S82T380
Rated power	P _{MPP} [W]	370	375	380
Rated voltage	V _{MPP} [V]	29.67	29.86	30.04
Rated current	I _{MPP} [A]	12.47	12.56	12.65
Open-circuit voltage	V _{OC} [V]	34.71	34.90	35.09
Short-circuit current	I _{SC} [A]	13.13	13.22	13.31
Efficiency (after installation) ³	h [%]	20.5	20.8	21.0
Efficiency (before installation) ⁴	h [%]	19.7	20.0	20.2

Electrical values measured under standard test conditions (STC): 1000 W/m²; 25 °C; AM 1.5

ELECTRICAL DATA (LOW IRRADIANCE)

		S82T370	S82T375	S82T380
Power	P _{MPP} [W]	74	75	76

Electrical values measured under: 200 W/m²; 25 °C; AM 1.5
Measurement tolerance of P_{MPP} under STC -3/+3 %
Accuracy of other electrical values -10/+10 %
³ Efficiency related to grid dimension /⁴ Efficiency related to gross module area

CERTIFICATIONS

Fire Resistance Class C (IEC 61730), E (EN 13501-1), B2 (DIN 4102-1)

Protection Against Electric Shock II

General Building Supervision Test Report against flying sparks and radiant heat (hard roofing) acc. DIN CEN/TS 1187-1; B_{ROOF} (t1) acc. DIN EN 13501-5

IEC 61215:2021, IEC 61730:2023 including:

- IEC 62804 - PID Resistance

- IEC/TS 62782:2016 - Dynamic mechanical load testing

Snail trail free (AgNP Test) (in process)

System Certifications acc. to DIN EN ISO 9001:2015, 14001:2015, 50001:2018 and DIN ISO 45001:2018

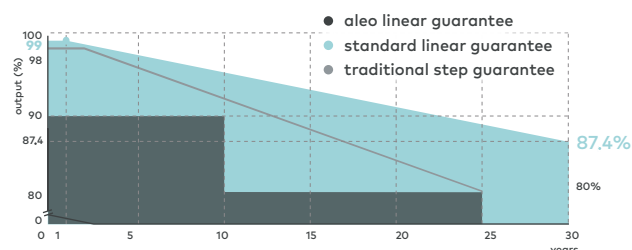
TEMPERATURE COEFFICIENTS

Temperature coefficient I _{SC}	α (I _{SC})	[%/K]	+0.029
Temperature coefficient V _{OC}	β (V _{OC})	[%/K]	-0.24
Temperature coefficient P _{MPP}	γ (P _{MPP})	[%/K]	-0.31

GUARANTEES

Product Guarantee	30 years
Power Guarantee	30 years - linear

PERFORMANCE GUARANTEE



PLEASE CONTACT YOUR AUTHORISED ALEO DEALER

ALEO SOLAR GMBH

Marius-Eriksen-Straße 1
17291 PRENZLAU
GERMANY

CONTACT

+49 3984-8328-0
info@aleo-solar.de
www.aleo-solar.com

©aleo solar GmbH 09/2024

aleo